

Amber D. Riley MS, RDH FAAFS, FIACME



Amber D. Riley MS, RDH, FAAFS, FIACME
619-823-2711 ARiley@DeCoEducation.com



Amber D. Riley, MS, RDH, FAAFS, FIACME

■ *Ms. Riley is a 1998 graduate of Sinclair College in Dayton, Ohio. She completed her Baccalaureate with Wright State University and Masters at Boston University. Amber is a subject matter consultant to over twenty dental boards, and she is a Forensic Dental Consultant for the San Diego County Office of the Medical Examiner and published author in peer-reviewed, scientific and clinical literature. She is a Fellow of the American Academy of Forensic Sciences, Fellow of the International Association of Coroners & Medical Examiners, Member of the California Dental Hygienists' Association, American Society of Forensic Odontology, and an Associate Member of the American Academy for Oral Systemic Health. Amber serves the Oral Cancer Foundation as a member of the RDH Advisory Board and lectures internationally covering evidence-based, oral-systemically focused topics for dental professionals, forensic odontology, and the use and misuse of therapeutic and illicit substances.*

Amber has been a featured speaker at numerous national, regional and state dental and dental hygiene conferences including the American Dental Association, Chicago Dental Association, California Dental Association, Thomas P. Hinman Meeting, RDH Under One Roof, Texas Dental Association, Pacific Dental Conference and many more.



Amber D. Riley MS, RDH, FAAFS, FIACME
619-823-2711 ARiley@DeCoEducation.com



▀ Patients, Pills & Pathologies ©

*Why Medical History
Clues are Critical to
General Dental Treatment*
3CEU



The number of Americans over the age of 65 exceeds 15% of the population and that number will increase by more than an additional 20% over the next few decades. As patient longevity increases, so will the number of conditions, diseases and potential disabilities that these patients will present with in our dental chairs.

Medically compromised patients with age-related diseases such as cancers, or lifestyle-associated factors such as obesity, drug use and abuse, as well as the myriad of common; and often underestimated, abnormal physical conditions that we cross paths with on a day-to-day basis demand a sharpened focus during our treatment planning, delivery of care and periodontal maintenance in general dentistry. These patients require clinicians that have a competent insight into medicine and pharmacotherapies, and are capable of deducing findings from patient medical histories and willing to collaborate with patients' medical providers to provide optimal dental care.

Amber D. Riley MS, RDH, FAAFS, FIACME
619-823-2711 ARiley@DeCoEducation.com



► ***Needles, Lungs & Tongues*** ©

*The Chemistry, Use and
Effect of Psychoactive
Substances.* 3CEU



Legal and illicit psychoactive substances are ubiquitous in our communities, including the patients we treat daily. Use and abuse, of psychoactive compounds date back hundreds, even thousands of years. This program will review what are many of the most important points of use that we must understand today, in order to mitigate acute risks when treating patients using them and what long term risks will become inherent in patients that continue to use them.

This program will discuss these questions from both a historical and present-day view, taking into consideration the law that governs their use and distribution, their physiology and clinical effects, benefits and detriments to use and what our roles and responsibilities are as health care providers and clinicians when treatment planning.

Amber D. Riley MS, RDH, FAAFS, FIACME
619-823-2711 ARiley@DeCoEducation.com



► **Mercy or Menace? ©**

*The Chemistry, Use and
Effect of Opiates and
alternatives for pain control.*
1-2 CEU



This program fulfills the requirements of continuing education for Dentists and Dental Hygienists on the impact of opioid abuse and/or the proper prescription writing and use of opioids, along with appropriate alternatives in the dental practice.

Legal and illicit psychoactive substances are ubiquitous in our communities, including the patients we treat daily. Use and abuse, of opiates date back hundreds, even thousands of years, but is their modern-day compounds that are both merciful *and* malevolent. This program will discuss the most important points of use to understand today, in order to mitigate acute risks when prescribing opiates, treating patients already using them and what long term risks will become inherent in patients that continue to use them.

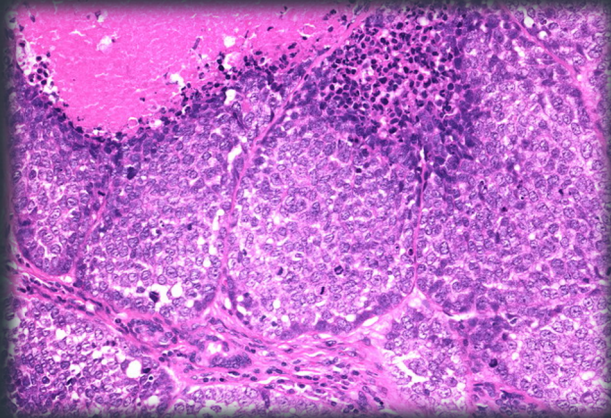
This program will discuss these questions from both a historical and present-day view, taking into consideration the law that governs their use and distribution, their physiology and clinical effects, benefits and detriments to use and what our roles and responsibilities are as health care providers and clinicians when treatment planning.

Amber D. Riley MS, RDH, FAAFS, FIACME
619-823-2711 ARiley@DeCoEducation.com



► *Red, White and Blue, what does it mean to YOU?©*

*Practical Oral Pathology
for the Dental Team ” 3.0
CE*



Oral lesions are a common finding in dental practice. During this course attendees will receive not only a refresher program on the topic of oral pathology, but will also be brought up to date with the most current, relevant discussions of widespread oral pathologies including their origins, treatments and outcomes. The audience will learn valuable insights and techniques that can be immediately introduced into their clinical practice to improve early detection and patient care.

***Amber D. Riley MS, RDH, FAAFS, FIACME
619-823-2711 ARiley@DeCoEducation.com***



► ***Fifty Shades of Green®***

*Forensic Dentistry in the
21st Century”*
3.0CEU



Participants of this course will gain an introductory knowledge of the science of forensic odontology and how the law dictates a forensic human identification. A brief review of the history, evolution and scope of forensic odontology will be presented as well as an introduction of the nomenclature commonly used in this field and death investigation systems will be explained. A step-by-step exploration of a comprehensive dental autopsy will be presented, including physical examination, photography, radiography and forensic evidence management needs of varying postmortem states including skeletonized, fragmented, decomposed and burned. Modern missing person investigation methods and multiple fatality incident management systems will be overviewed.

Age 18+

Amber D. Riley MS, RDH, FAAFS, FIACME
619-823-2711 ARiley@DeCoEducation.com



▶ ***Our Requiem;
Dentistry, Death
and the Law in
Contemporary
Forensic Science®
3CEU***



The roles that dentistry serves for forensic science continue to evolve. Forensic dentistry contributes not only to scientific human identification, be it a single individual or a multiple fatality incident and the recognition, evidence preservation and proper documentation of numerous methods and manifestations of abuse, but also in assisting law enforcement with missing persons, cold case investigations, and in matters of litigation citing parameters or standards of dental care.

This program will provide a comprehensive account of a dental autopsy. The photographic, radiographic and clinical management techniques necessary to several postmortem states will be shown, including: skeletonized, fragmented, decomposed and burned. The publicly accessible database for missing, unidentified and unclaimed persons will be introduced for the cyber sleuth ready to volunteer! State and Federal multiple fatality incident management systems will be overviewed.

AGE 18+

***Amber D. Riley MS, RDH, FAAFS, FIACME
619-823-2711 ARiley@DeCoEducation.com***



► **Systemic Cyclones®**

*The Biology of Disease
and Wellness*

3CEU



Like spokes on a wheel that never stops, the cycle of infection, immune response, inflammation and recovery will never cease as long as we live. This program examines the deadly synergistic exacerbation between cardiovascular disease (CVD), which is the leading cause of death and disability for men and women in North America, and, the contributing role oral disease plays in patients with CVD. The conditions of metabolic syndrome, insulin resistance, and others with their devastating cardiovascular effects that lead to outcomes of heart attack and stroke will be discussed.

Amber D. Riley MS, RDH, FAAFS, FIACME
619-823-2711 ARiley@DeCoEducation.com



► **Now You See It!®**

*Understanding,
interpreting and applying
autofluorescence for early
intervention of oral
pathologies. 1.5 CEU*



Screening for oral cancer isn't an optional service we provide our patients; it is one of our ethical obligations to their well-being and to our oath of service. Extend your vision to a deeper level by applying autofluorescence technology to easily, safely and effectively provide a more thorough oral cancer screening examination.

Participants will:

- ✓ Be trained on the background, safety, physics, interpretation and applications of oral autofluorescence technologies that are available today.
- ✓ Review current data surrounding oral/pharyngeal carcinomas and other pathologies.
- ✓ Review risk factors of lifestyle, environmental exposures and health history red-flags to improve critical thinking and guide clinical judgement for biopsy/referral or observation.
- ✓ Consent, Billing & ROI discussions for autofluorescence device examination procedures will be reviewed.

Amber D. Riley MS, RDH, FAAFS, FIACME
619-823-2711 ARiley@DeCoEducation.com





"We love having Amber on our program!"

-Paula Tait Lerash, CEM Texas Dental Association

- ***"GREAT SPEAKER. Knowledgeable, very easy to follow, very applicable to day to day practice".***
- ***"Funny and entertaining. Really good job!"***
- ***"Her presentations on Oral Pathology and Forensic Dentistry were among the top five most attended sessions, her evaluations and reviews were excellent. She was a pleasure and a joy to work with. She is definitely on NODC's "return list". Her professionalism and dedication were an inspiration to all who attended her presentations."*** *-Gustavo M. Coutin DDS, General Chairman of the New Orleans Dental Conference*
- ***"Amber definitely sets the bar from a meeting planners standards. She responds promptly, organized, delightful personality and passionate about lecturing. All of her attendee evaluations were rated excellent. It is apparent she enjoys lecturing and would be an asset to any meeting."***

-Jane Evans, Southwest Dental Conference
- ***"Seriously the best class here! Her manner of teaching was very engaging and she really knew the information".***

***Amber D. Riley MS, RDH, FAAFS, FIACME
619-823-2711 ARiley@DeCoEducation.com***

